

LINX Suite Expansion

Robert Lister

Purpose

- Expand LINX suite in Telehouse North
- Improve cable management
- Higher density cable capacity
- Bigger cabinets for bigger switches and cable management
- Power upgrades
- Eventually strip out the current racks
- Option to add improved work space

Issues...

- Many changes to the plans!
- Current occupant can't fully vacate yet
- We need the MLX-32 switches in ASAP!
- Many changes to the plans!

Issues...

- Many changes to the plans!
- Current occupant can't fully vacate yet
- We need the MLX-32 switches in ASAP!
- Many changes to the plans!
- We might have changed the plans a bit

Issues...

- Many changes to the plans!
- Current occupant can't fully vacate yet
- We need the MLX32 switches in ASAP!
- Many changes to the plans!
- We might have changed the plans a bit

Issues...

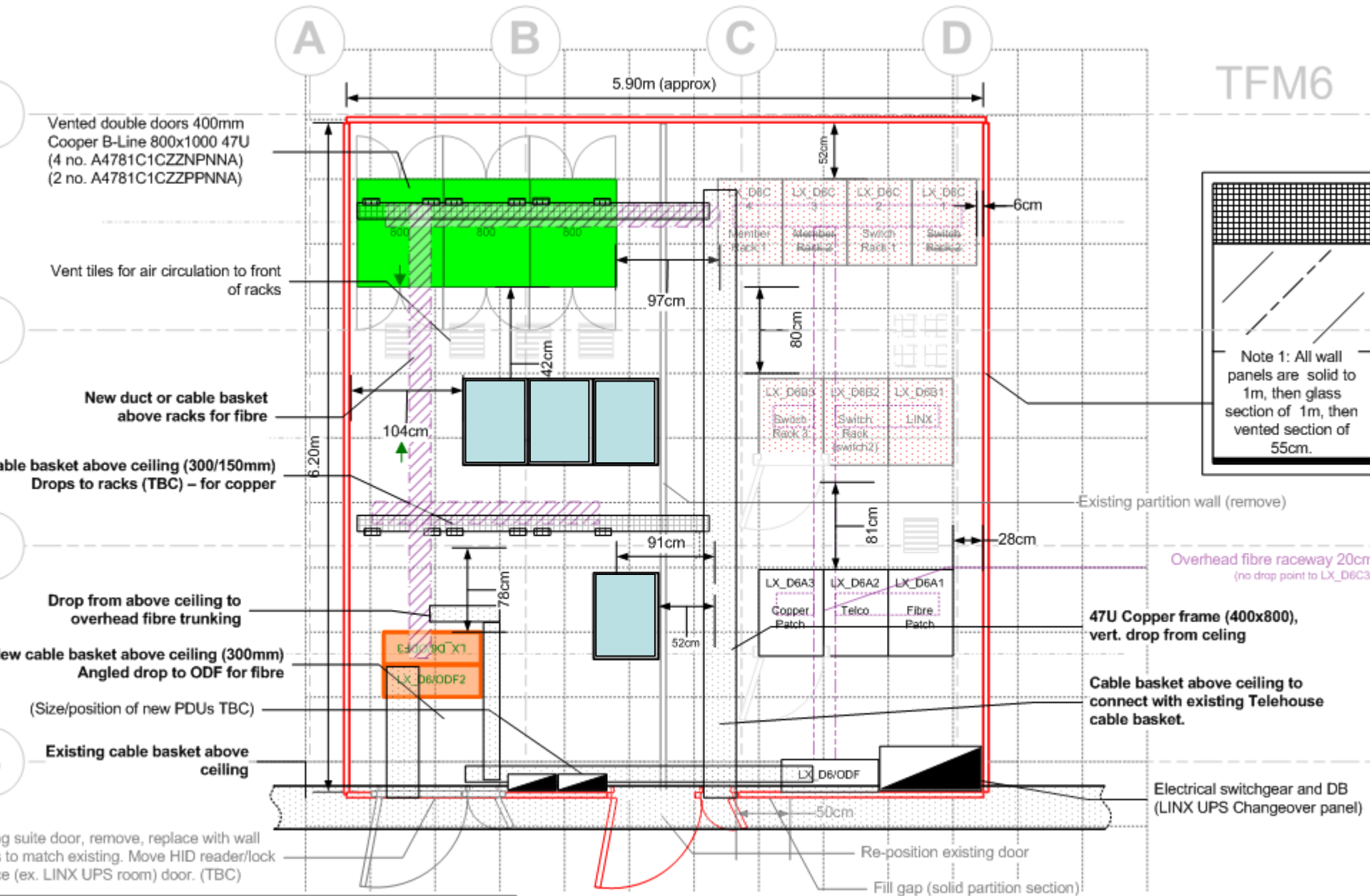
- Many changes to the plans!
- Current occupant can't fully vacate yet
- We need the MLX32 switches in ASAP!
- Many changes to the plans!
- We might have changed the plans a bit
- Can I just change my mind again?

Issues...

- Many changes to the plans!
- Current occupant can't fully vacate yet
- We need the MLX32 switches in ASAP!
- Many changes to the plans!
- We might have changed the plans a bit
- Can I just change my mind again?
- Still lots of unknowns...

Phases

- **Phase 1:**
 - Three new cabinets
 - Power upgrades
 - New cable management above ceiling
 - New fibre management/ODFs
 - New MLX32 switch install
 - Shared occupancy



Not for contract

Contractor: -
Issue: 2d (rev: 1) Ref: PO#
Job: -

Title: Telehouse North TFM6 LINX Suite
Project: Proposed TFM6 Suite Expansion
Author: Robert Lister
Date: 18 April 2008

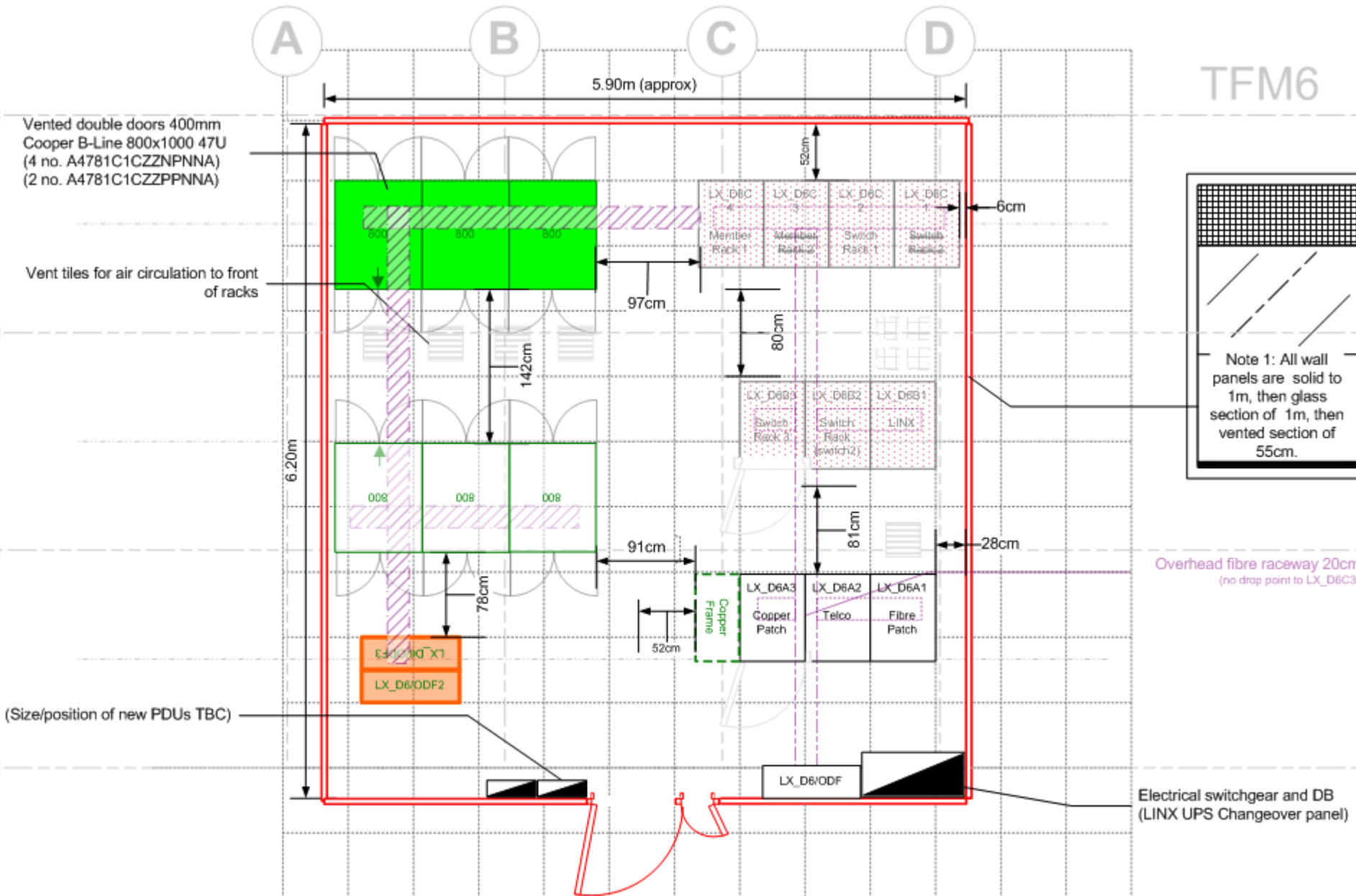
LINX

Phases

- **Phase 2:**
 - Old occupant move out!
 - Addition of 3 more cabinets for Extreme/Second Network
 - Remove dividing wall
 - Move door etc.
 - Upgrade copper cable management

Vented double doors 400mm
Cooper B-Line 800x1000 47U
(4 no. A4781C1CZZNPNA)
(2 no. A4781C1CZZPPNA)

Vent tiles for air circulation to front
of racks



Not for contract

Contractor: -
Issue: 2d (rev: 1) Ref: PO#
Job: -

Title: Telehouse North TFM6 LINX Suite
Project: Proposed TFM6 Suite Expansion
Author: Robert Lister
Date: 18 April 2008

LINX

Phases


- **Phase 3:**
 - Strip out current suite
 - New cabinets
 - Improved cable management
 - Power upgrade
 - Remove AP400 UPS
 - Turn UPS room into work area

Progress to date

- Power feeds
- Containment / Cable management
- Cabinets installed
- ODFs installed
- MLX-32 (and spare) installed



**Warning**
Noise level between 80dB(A) & 85dB(A)
 Ear protection is available
on request

Warning! 
This area is under continuous
electronic surveillance
Do not enter unless authorised
Images are recorded for the purposes of
Safety, Support and Security
management
For more details please contact:
LINX
020 7545 3535 (24 Hour)

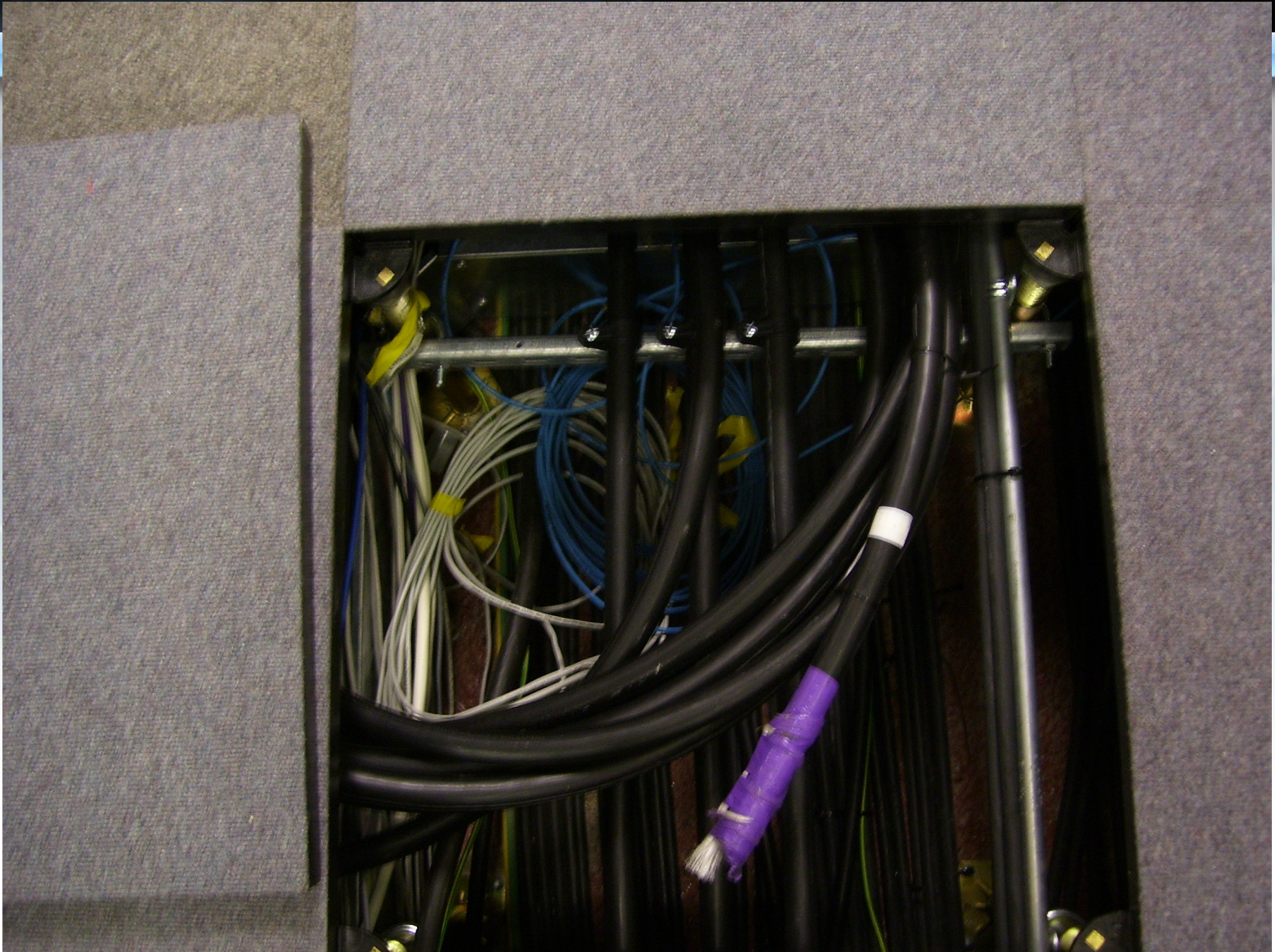




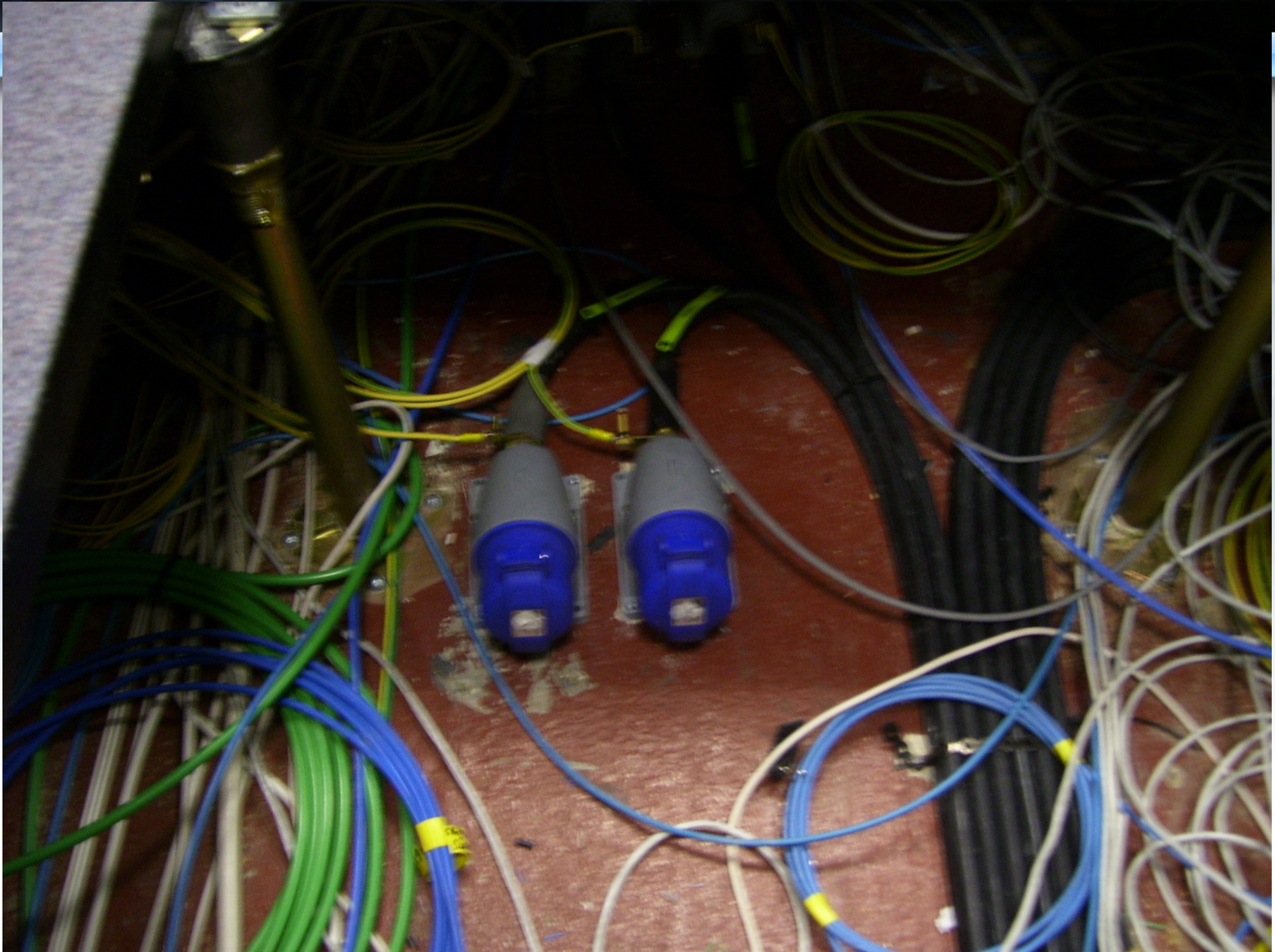
LINX™













LINX[™]



LINX[™]



LINX™



LINX™



LINX[™]



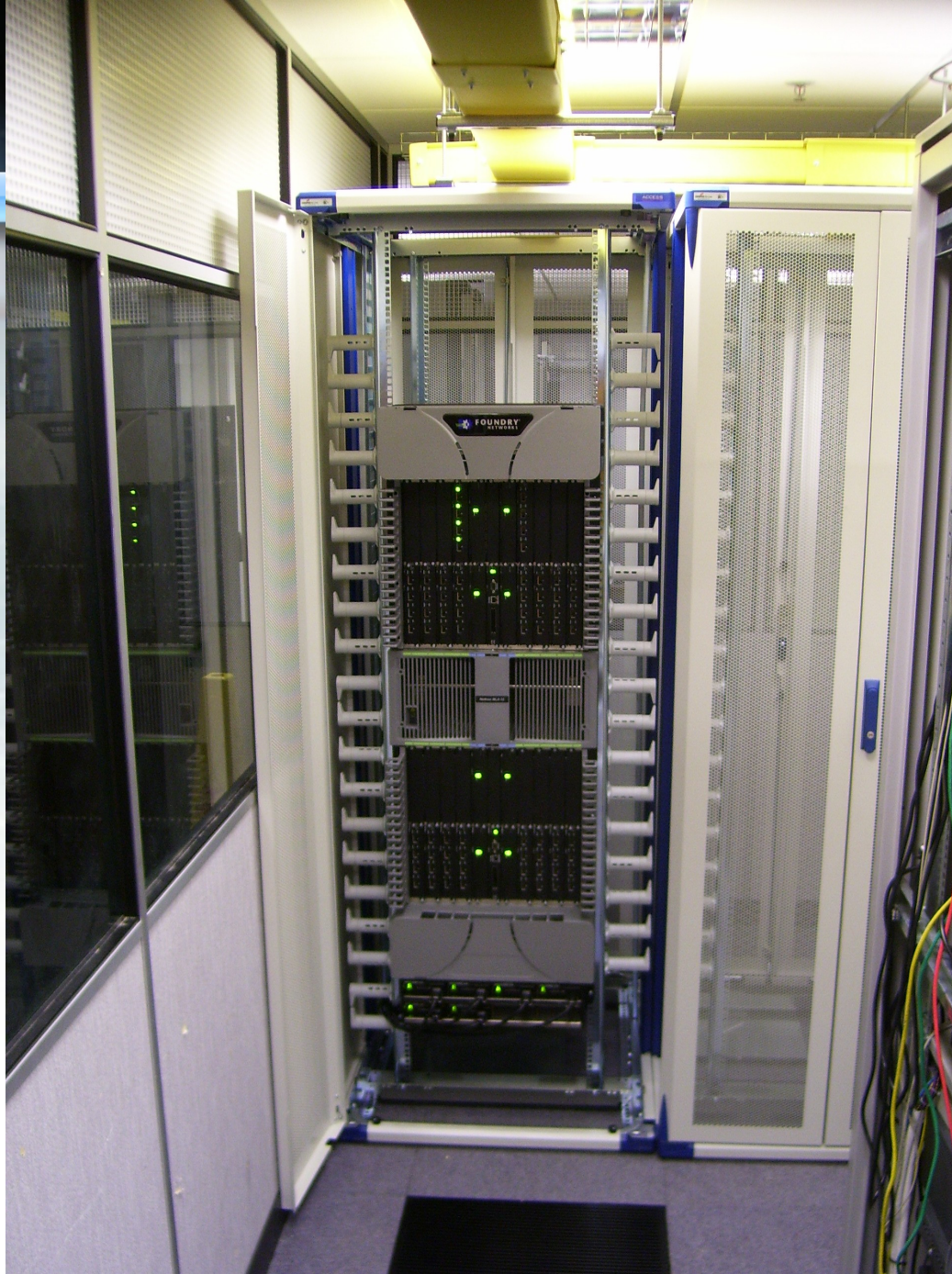
LINX[™]







LINX™

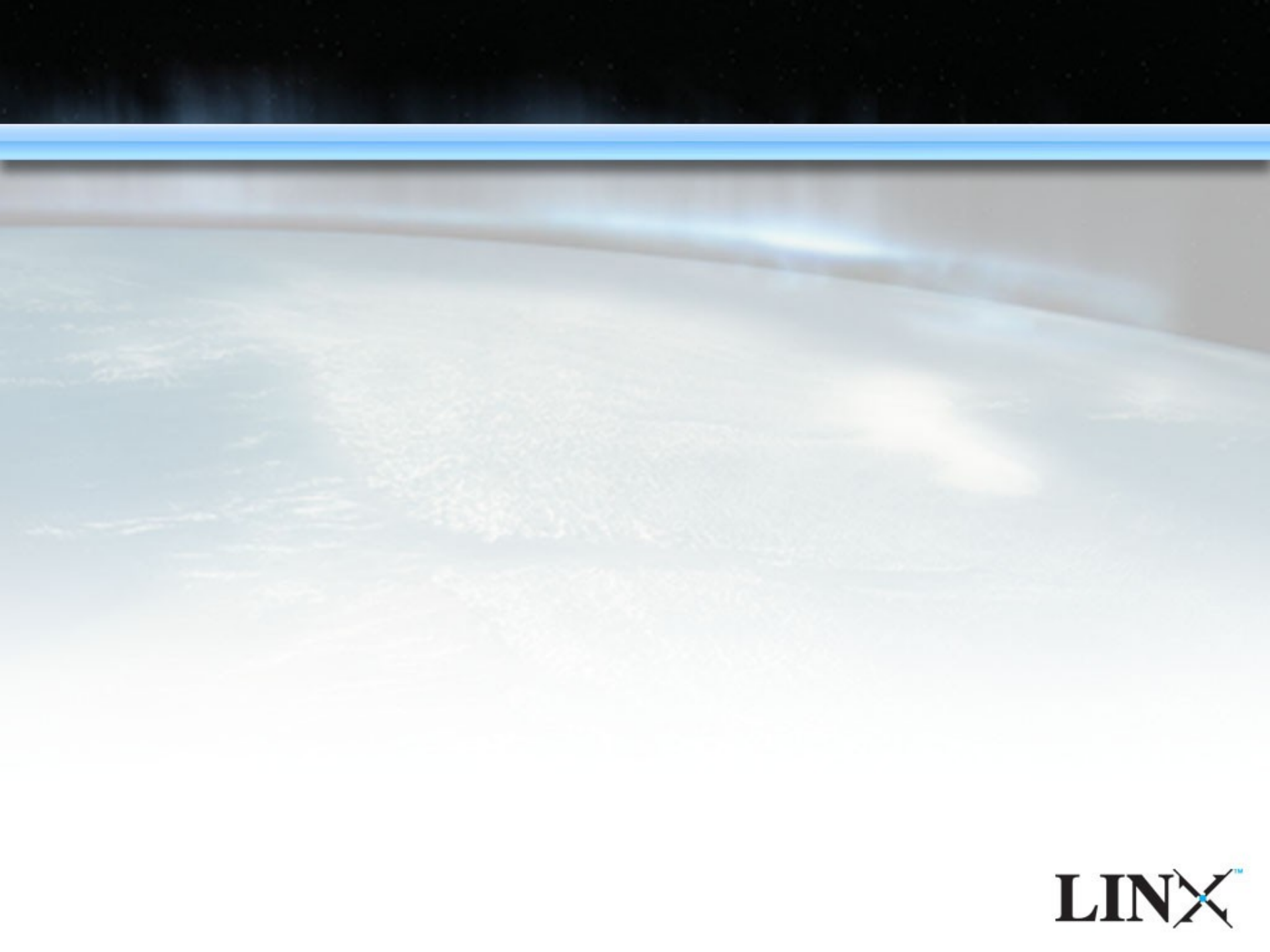


LINX™





LINX™



LINX™